

REVISION HISTORY				
REV.	DESCRIPTION	ER NUMBER	DATE	APPROVAL
1.3	REVISED PER ER	ER-49834	08/21/23	A.LETSO
1.2	REVISED PER ER	ER-47880	06/13/18	A.LETSO
1.1	REL PER ER	ER-40571	04/17/08	T.PAYNE

NOTES: UNLESS OTHERWISE SPECIFIED.

1. SWITCHES WITH SEALED DRESS RINGS SHALL BE IDENTIFIED WITH STACOSWITCH/STACOSYSTEMS NAME/LOGO, PART NUMBER, CODE IDENTIFICATION, AND DATE CODE.
2. SWITCHES WITHOUT SEALED DRESS RINGS OR WITH TWO HEX NUTS SHALL BE IDENTIFIED WITH STACOSWITCH/STACOSYSTEMS NAME/LOGO, PART NUMBER, CODE IDENTIFICATION, AND DATE CODE.

Documentation and specifications herein are the sole property of Staco Systems, Inc, issued in strict confidence, and shall not be used to reproduce, manufacture, or allow for the sale or transfer of design herein without the explicit and written permission of Staco Systems, Inc. All documentation and specifications herein shall be returned upon request, completion of work, and at end of or termination of contract to Staco Systems, Inc.

CUSTOMER

7 MORGAN, IRVINE CA 92618 [www.stacosystems.com](http://www.stacosystems.com)

APPROVALS

DATE

Drawn

T.HANA

04/17/08

**stacosystems**  
One Step Ahead

TEL: (949) 297-8700  
FAX: (949) 297-8749

A COMPONENTS CORPORATION OF AMERICA COMPANY

THIRD ANGLE PROJECTION



UNLESS OTHERWISE SPECIFIED  
DIMENSIONS ARE IN INCHES

TOLERANCES

DECIMALS	ANGLES	FRACTIONS
X ± .03	± 1/2°	± 1/64
XX ± .010		
XXX ± .005		

CHECKED

PROJ ENG

MGMT

DO NOT SCALE DRAWING

TITLE

SWITCH, PUSHBUTTON, ENVIRONMENTALLY SEALED

SIZE

A

CAGE CODE

12522

DWG NO

SERIES 30 SCD

REV

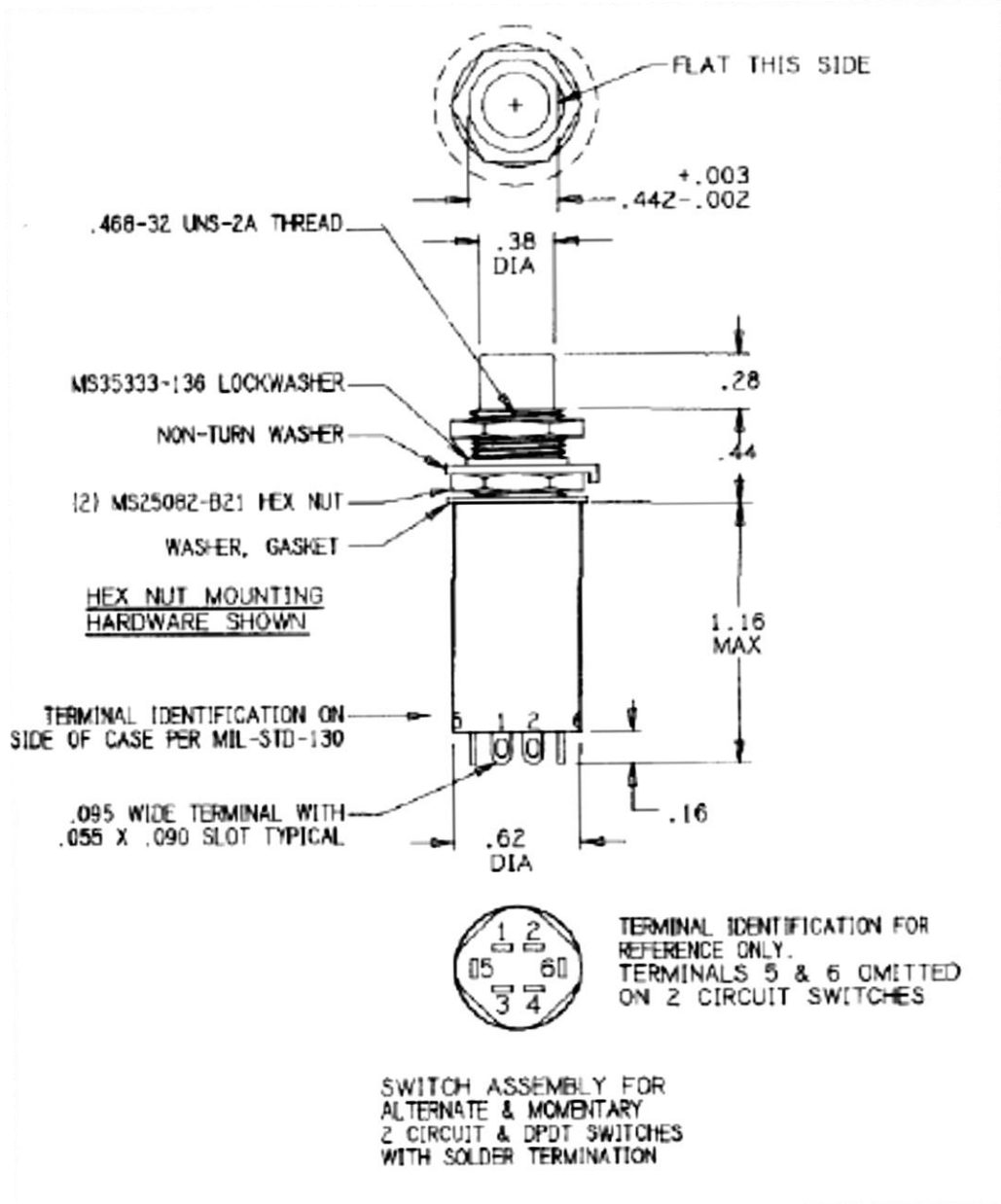
SCALE

NONE

WT

SHEET

SHEET 1 OF 8



Use or disclosure of data contained on this sheet is subject to restrictions of the title page of this document.

SIZE

A

CAGE CODE

12522

DWG NO

SERIES 30 SCD

REV

SEE SHEET 1

DO NOT SCALE DRAWING

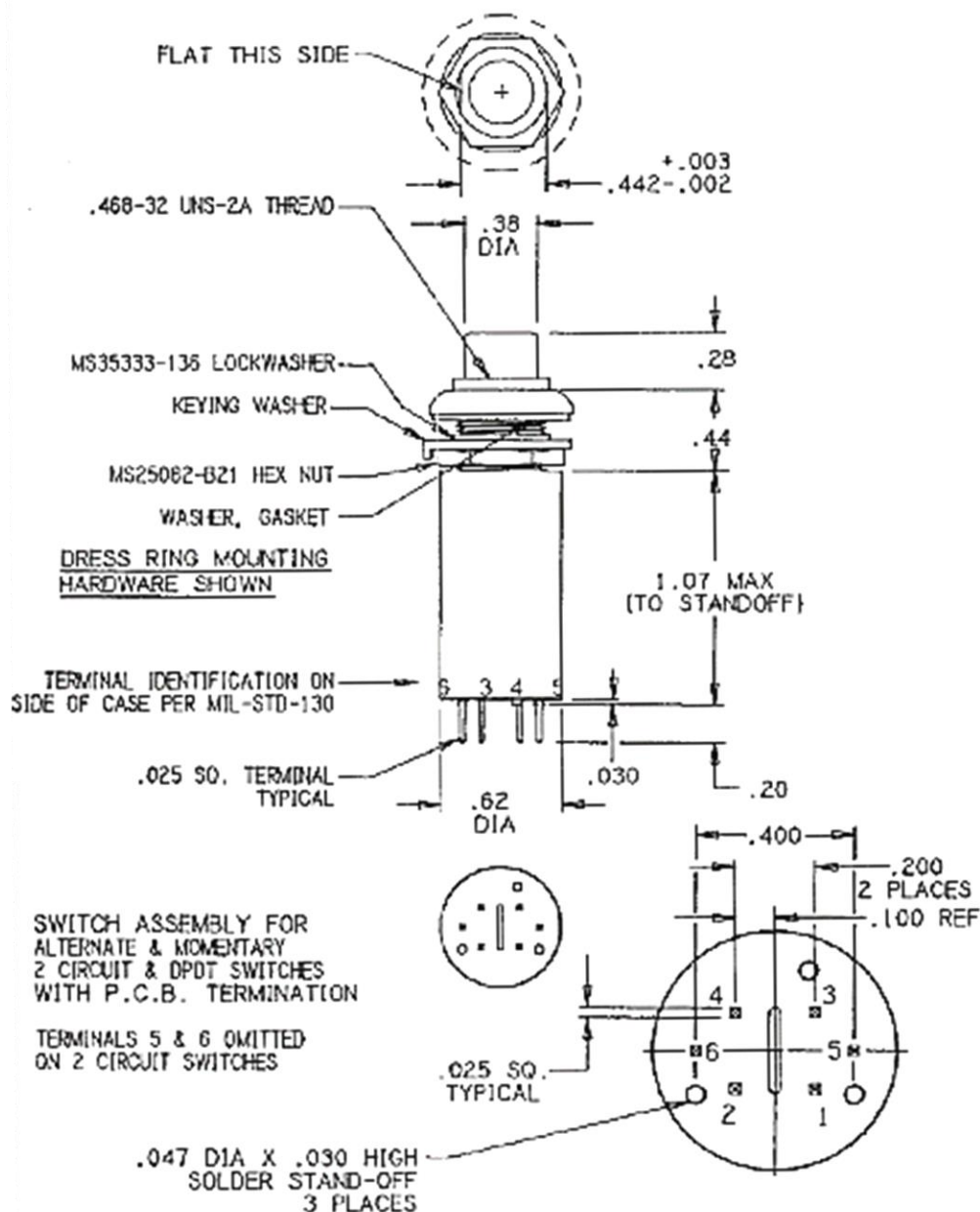
SCALE

NONE

WT

SHEET

SHEET 2 OF 8



Use or disclosure of data contained on this sheet is subject to restrictions of the title page of this document.

SIZE  
A

CAGE CODE  
12522

DWG NO  
SERIES 30 SCD

REV

SEE SHEET 1

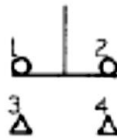
DO NOT SCALE DRAWING

SCALE  
NONE

WT

SHEET

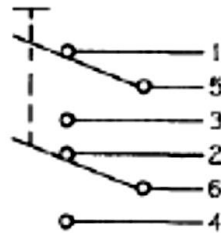
SHEET 3 OF 8



2 CIRCUIT SWITCH

MOMENTARY ACTION  
PN: 30260, 30560

ALTERNATE ACTION  
PN: 30259, 30559



DPDT SWITCH

ALTERNATE ACTION  
PN: 30261, 30561

MOMENTARY ACTION  
PN: 30262, 30562

# CIRCUIT SCHEMATICS

Use or disclosure of data contained on this sheet is subject to restrictions of the title page of this document.

SIZE

A

CAGE CODE

12522

DWG NO

SERIES 30 SCD

REV

SEE SHEET 1

DO NOT SCALE DRAWING

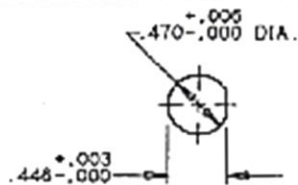
SCALE

NONE

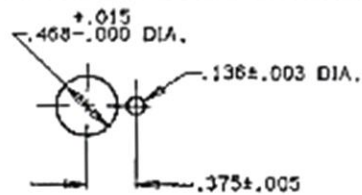
WT

SHEET

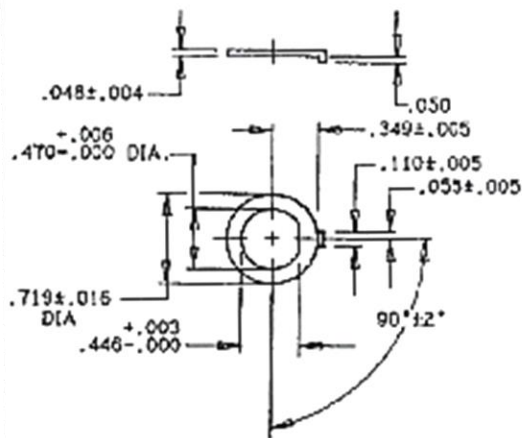
SHEET 4 OF 8



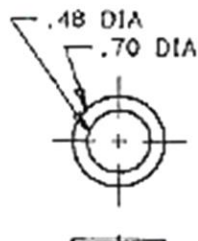
PANEL MOUNTING HOLE



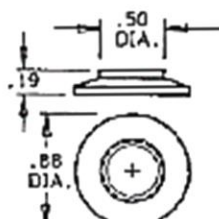
ALTERNATE MOUNTING  
HOLE FOR NON-TURN WASHER



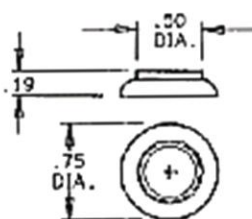
NON-TURN WASHER



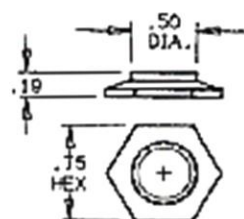
WASHER, GASKET  
(SILICONE RUBBER)



TYPE "A"

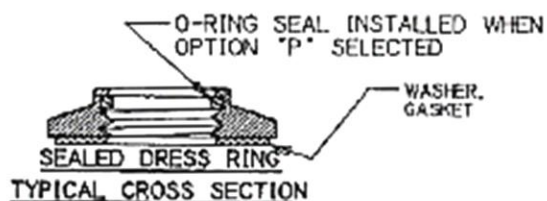


TYPE "B"



TYPE "C"

DRESS RINGS



TYPICAL CROSS SECTION

Use or disclosure of data contained on this sheet is subject to restrictions of the title page of this document.

SIZE  
A

CAGE CODE  
12522

DWG NO  
SERIES 30 SCD

REV

SEE SHEET 1

DO NOT SCALE DRAWING

SCALE  
NONE

WT

SHEET

SHEET 5 OF 8

## ORDERING INFORMATION

This section contains the information necessary to order each of the standard and optional features of the Series 30 Switch configurations described in this specification. The "coded" part number of each switch, is established by using the configurator chart below.

### Part Number Code -

**30XXX - XX X XX X**

Part Number      Switch Action      Contact Arrangement

#### Solder Terminals -

<b>259</b>	Alternate	2 Circuit
<b>260</b>	Momentary	2 Circuit
<b>261</b>	Alternate	DPDT
<b>262</b>	Momentary	DPDT

#### PCB Terminals -

<b>559</b>	Alternate	2 Circuit
<b>560</b>	Momentary	2 Circuit
<b>561</b>	Alternate	DPDT
<b>562</b>	Momentary	DPDT

Panel Seal

**P** = Dress Ring with Seal  
(omit if not required)

Specifies Dress Ring Color

**11** = Red  
**12** = Green  
**16** = Blue  
**17** = Grey  
**18** = Black  
**19** = Clear

Specifies Dress Ring Style

**A**, **B**, or **C** = Dress Ring Style  
**N** = Hex Nut, No Dress Ring

Specified Pushbutton Color

**11** = Red  
**18** = Black  
**14** = White (100 pc. Min.)

Use or disclosure of data contained on this sheet is subject to restrictions of the title page of this document.

SIZE  
**A**

CAGE CODE  
**12522**

DWG NO  
**SERIES 30 SCD**

REV

**SEE SHEET 1**

**DO NOT SCALE DRAWING**

SCALE  
**NONE**

WT

SHEET

**SHEET 6 OF 8**

## SPECIFICATIONS, SERIES 30 PUSHBUTTON SWITCH

THE PUSHBUTTON SWITCHES DEFINED BY THIS SPECIFICATION CONTROL DRAWING ARE BUILT IN ACCORDANCE TO THE APPLICABLE REQUIREMENTS OF MIL-PRF-8805.

### 1. MECHANICAL:

- 1.1. SWITCH ACTION: ALTERNATE ACTION: PUSH-PUSH, SNAP ACTION  
MOMENTARY: PUSH-MOMENTARY, SNAP ACTION
- 1.2. ACTUATING FORCE 3 TO 6 POUNDS
- 1.3. PLUNGER TRAVEL: .176 MAX.
- 1.4. MOUNTING HARDWARE SEE SHEETS 2 AND 3 FOR TYPICAL MOUNTING HARDWARE COMBINATIONS.

### 2. ELECTRICAL:

- 2.1. CONTACT LOAD RATING.

LOAD TYPE	SEA LEVEL 28VDC 115 VAC, 400Hz (AMPERES)	70,00 FEET 28 VDC (AMPERES)
RESISTIVE	2.0	2.0
INDUCTIVE	1.5	1.5
LAMP	.5	0.5

- 2.2. CONTACT MATERIAL SILVER ALLOY, GOLD PLATED
- 2.3. DIELECTRIC STRENGTH SEA LEVEL: 1,000 VRMS  
70,000 FEET: 500 VRMS
- 2.4. INSULATION RESISTANCE 1,000 MEGAOHMS MIN @ 500 VDC
- 2.5. LIFE AT RATED LOAD 100,000 CYCLES

### 3. ENVIRONMENTAL: (SEALED SWITCH ONLY)

- 3.1. SEAL SPLASH PROOF AND DUST-TIGHT: MIL-PRF-8805 ENCLOSURE DESIGN SYMBOLS 6 AND 2. TESTS PER MIL-STD-108.
- 3.2. TEMPERATURE -55°C TO +85°C
- 3.3. SHOCK MIL-PRF-8805, TYPE M, METHOD I, MIL-STD-202, METHOD 213, TEST CONDITION A (50G).
- 3.4. HIGH IMPACT SHOCK APPLICABLE FOR MOMENTARY ACTION SWITCHES ONLY: HIGH IMPACT SHOCK, PER MIL-PRF-8805, TYPE H, METHOD II; MIL-STD-202, METHOD 207 AND METHOD 310 WITH 39 MILLISECONDS MAXIMUM SWITCH CHATTER.
- 3.5. VIBRATION .06 D.A. OR 15G'S, 10 TO 2,000 Hz, PER MIL-STD-202, METHOD 204, TEST CONDITION B.

Use or disclosure of data contained on this sheet is subject to restrictions of the title page of this document.

SIZE  
A

CAGE CODE  
12522

DWG NO  
SERIES 30 SCD

REV

SEE SHEET 1

DO NOT SCALE DRAWING

SCALE  
NONE

WT

SHEET

SHEET 7 OF 8

- |       |               |   |
|-------|---------------|---|
| 3.6.  | FUNGUS        | NONE OF THE MATERIALS OR FINISHES USED IN CONSTRUCTION OF THIS ASSEMBLY WILL SUPPORT ANY FUNGUS ENCOUNTERED IN TROPICAL CLIMATES.                                   |
| 3.7.  | HUMIDITY      | 10 DAYS, WITH 10 CYCLES AT 90-98 PERCENT RELATIVE HUMIDITY AT +65°C PER MIL-STD-202, METHOD 106.  |
| 3.8.  | SALT SPRAY    | 96 HOUR PER MIL-STD-202, METHOD 101, TEST CONDITION A.  |
| 3.9.  | SAND AND DUST | PER MIL-STD-202, METHOD 110, TEST CONDITION B   |
| 3.10. | EXPLOSION     | THESE UNITS CAN BE SAFELY OPERATED UNDER LOAD IN AN EXPLOSIVE ATMOSPHERE WITHOUT DANGER OF EXPLOSION PER MIL-STD-202, METHOD 109.                                   |
| 4.    | MATERIAL:     | HOUSING AND DRESS RING, ALUMINUM ALLOY ANODIZED PER MIL A-8625, HOUSING COLOR BLACK. BUTTON, HIGH TEMP. THERMOPLASTIC. WASHER GASKEY, SILICONE RUBBER PER ZZ-R-765. |