
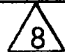


SPECIFICATION CONTROL DRAWING	LTR	REVISION	DATE	APPROVAL
	N/C	RELEASE ER 11669 TYPE II	1/12/79	WEB
	A	REV. PER ER 11801 TY II	3-15-79	WEB
	B	REVISED PER ER 12058 TY II	6-20-79	WEB
	C	REVISED PER ER 13006 TYPE II		
	D	REVISED PER ER 13693 TYPE II	7/29/81	as
	E	REVISED PER ER 15600, TYPE II	9-30-83	WEB
	H	REVISED PER ER 16851 TYPE II	6-27-84	WEB
	J	REV PER ER-18948	8-19-87	(AW) [Signature]
	K	REV PER ER-01-31114	2-8-95	[Signature]

NOTES: (UNLESS OTHERWISE SPECIFIED)

- 1 ALL TERMINAL NUMBERS APPEAR BOTH ON THE SWITCH TERMINAL HEADER AND ON THE RECEPTACLE. SWITCH MODULE AND RECEPTACLE BUILT WITH ONLY THOSE TERMINALS REQUIRED BY NUMBER OF POLES ORDERED.
- 2 UNIT SHALL BE IDENTIFIED WITH STACOSWITCH LOGO, FEDERAL IDENT. NO., MODEL 89 CODED PART NUMBER, DATE CODE, AND SCHEMATIC ON SURFACE INDICATED.
- 3 UNIT SUPPLIED WITH: ONE (1) #2-56 JACKSCREW FOR SWITCH MODULE INSTALLATION.
ONE (1) #2-56 MOUNTING SCREW AND LOCKWASHER FOR HOUSING INSTALLATION.
- 4 SEE SERIES 80 SUNLIGHT READABLE PUSHBUTTON AND DISPLAY SCREEN SPECIFICATION CONTROL DRAWING.
- 5 SEE MODEL 80M SWITCH MODULE SPECIFICATION CONTROL DRAWING.
- 6. MATERIALS:

HOUSING	- 6061 ALUMINUM, BLACK ANODIZE	}	NON-RFI SHIELDED UNITS ONLY
BEZEL	- 302-304 SST, DULL BLACK OXIDE		
MOUNTING BRACKET	- CORROSION RESISTANT STEEL	}	RFI SHIELDED UNITS ONLY
SWITCH TERMINALS	- CONSIL, GOLD PLATE		
HOUSING	- 6061 ALUMINUM, CHEM FILM*	}	RFI SHIELDED UNITS ONLY
BEZEL	- 302-304 SST, PLAIN		
MOUNTING BRACKET	- CORROSION RESISTANT STEEL		
SWITCH TERMINALS	- CONSIL, GOLD PLATE		

UNLESS OTHERWISE SPECIFIED DIMENSIONS ARE IN INCHES	PREPARED NORFOLK DATE 1/12/79	 <small>a STACO, INC. company</small>				
TOLERANCES .XX ± .03(.762) .XXX ± .010(.254) ANGLE ±	CHECKED <i>WEB</i> DATE 1/12/79	TITLE SWITCH, LIGHTED, 2PDT & 4PDT MOMENTARY & ALTERNATE ACTION, INDIVIDUAL MOUNT WITH RECEPTACLE - STANDARD & RFI SHIELDED FOR USE WITH SUNLIGHT READABLE P/B				
	ENGINEER <i>WEB</i> DATE 1/12/79					
CUSTOMER ----- CATALOG ----- STANDARD ----- SPECIFICATION / DRAWING	APPROVED DATE APPROVED DATE PROD. MGR. DATE	CODE IDENT NO. 12522	SIZE A	DRAWING NO. MODEL 89 & R89 CODED	REV. <i>[Signature]</i>	
	SCALE 1/1	UNIT WEIGHT SEE NOTE				SHEET 1 OF 5

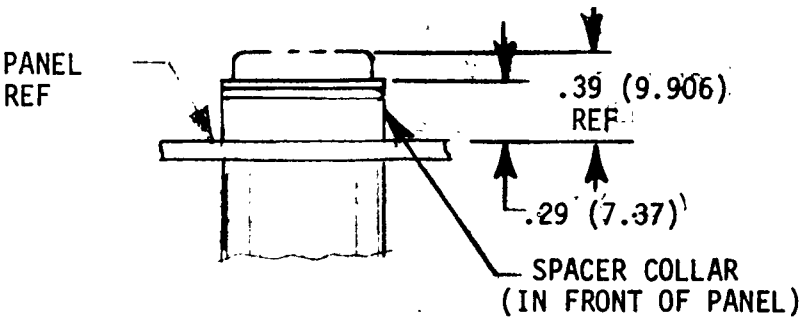
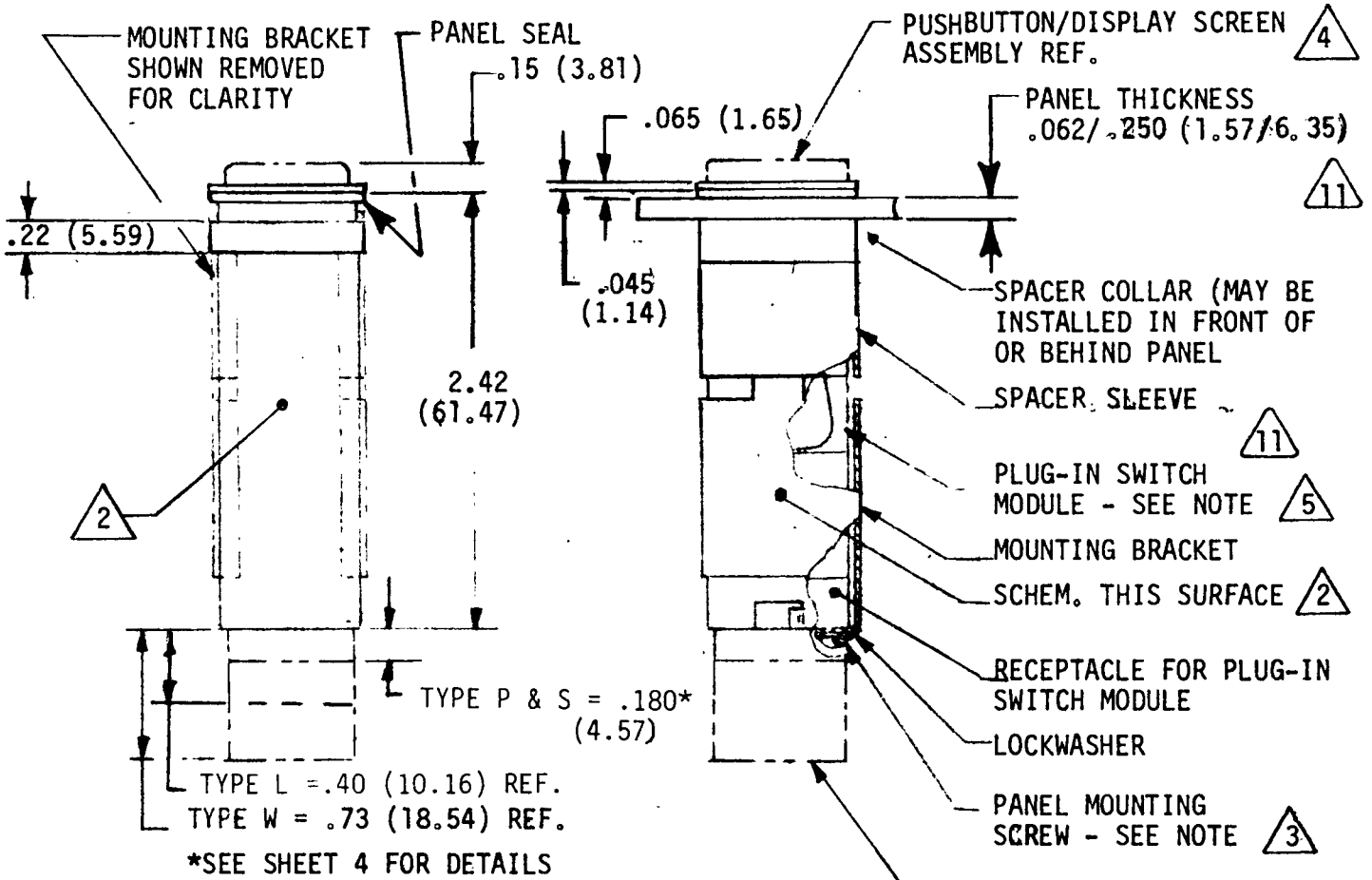
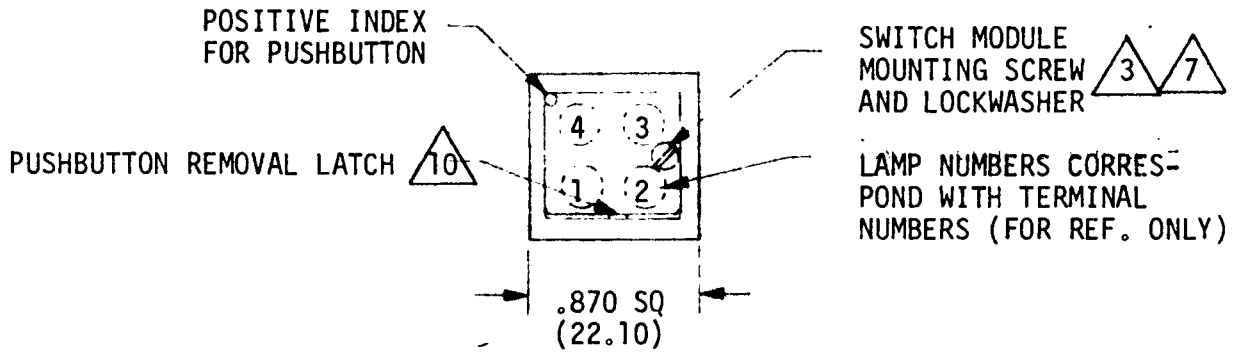
*RFI SHIELDED UNITS - CHEMICAL FILM (IRIDITE OR ALODINE)
COLOR SHALL BE LIGHT STRAW TO GOLD

7. THE INSTALLATION TORQUE FOR THE PANEL MOUNTING SCREWS SHALL BE 8 OUNCE-INCHES (5.65×10^{-2} N.m) MAX. AND 16 OZ.-IN. (1.13×10^{-1} N.m) FOR MODULE MTG. SCREW.
8. THE WEIGHT OF THE COMPLETE UNIT, INCLUDING MOUNTING ASSEMBLY, SWITCH MODULE AND PUSHBUTTON, SHALL BE 0.11 POUNDS (50 GM).
9. WHEN HOUSING ASSEMBLY ONLY (X89XXX - S, L, W, P) IS ORDERED, RECEPTACLE SHALL BE SUPPLIED WITH ALL TERMINALS.
10. TO REMOVE PUSHBUTTON, MOVE LATCH LEVER TO RIGHT.
11. SPACER SLEEVE MAY BE INVERTED FOR PANEL THICKNESS OF .12 TO .25.

12.

SPLIT LAMP GROUND CIRCUIT CONFIGURATIONS 09, 10 AND 11 ARE ALSO AVAILABLE UNDER THIS DOCUMENT. UNITS 09, 10 AND 11 ARE IDENTICAL TO 12, 13 AND 14 UNITS RESPECTIVELY EXCEPT FOR LAMP COMMON TERMINAL LOCATIONS. ON 09, 10 AND 11, USE LAMP COMMON TERMINALS "C" AND "B". UNITS 12, 13 AND 14, USE TERMINALS "C" AND "A".

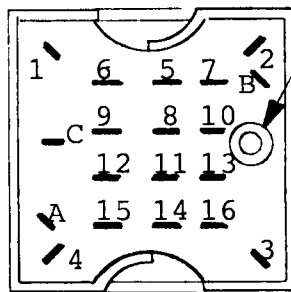
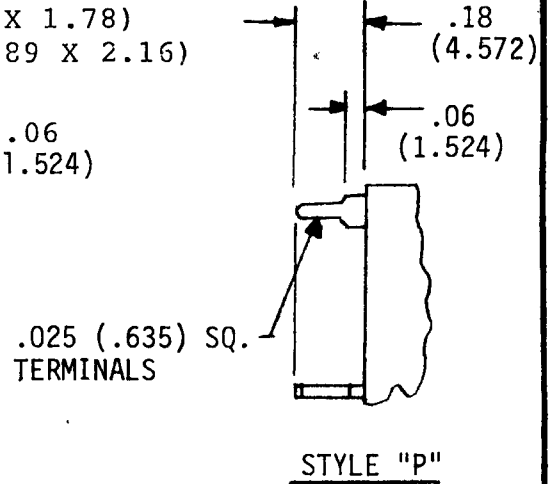
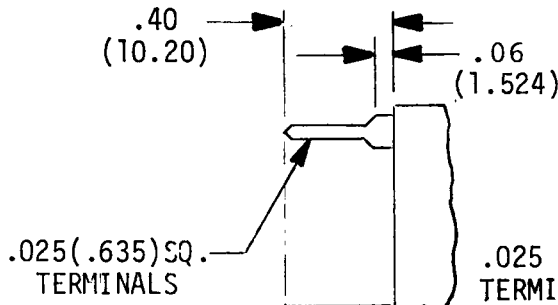
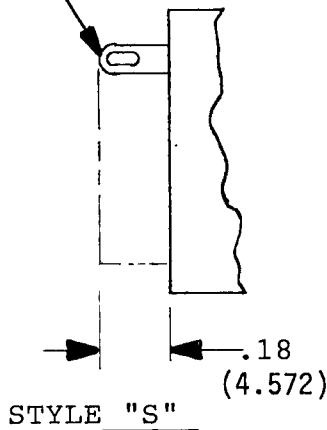
CODE IDENT NO.	DRAWING NO.	REV.	SHEET
12522	MODEL 89 & R89 CODED	K	2



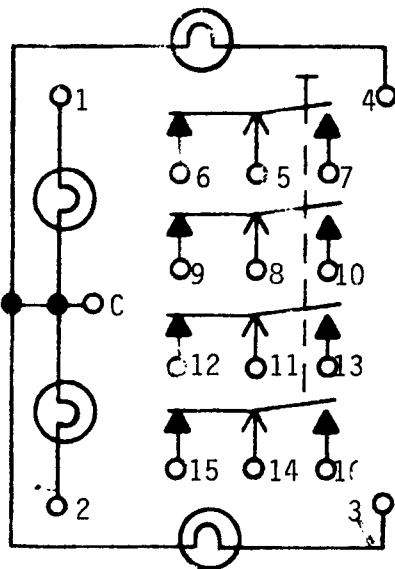
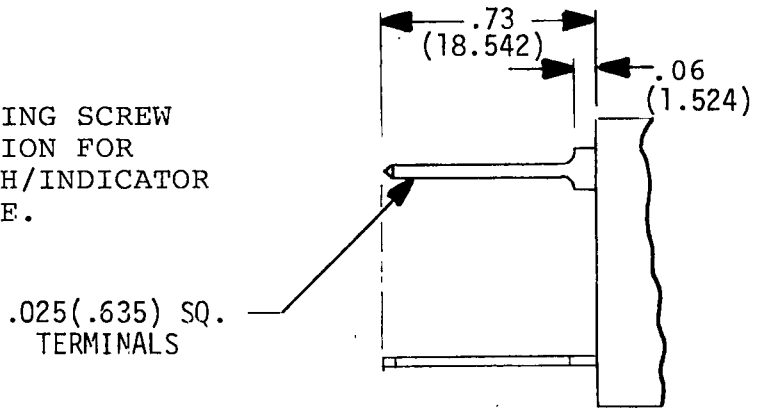
ALTERNATE INSTALLATION CONFIGURATION

CODE IDENT NO. 12522	SIZE A	DRAWING NO. MODEL 89 & R89 CODED	SHEET 3
--------------------------------	------------------	-------------------------------------	-------------------

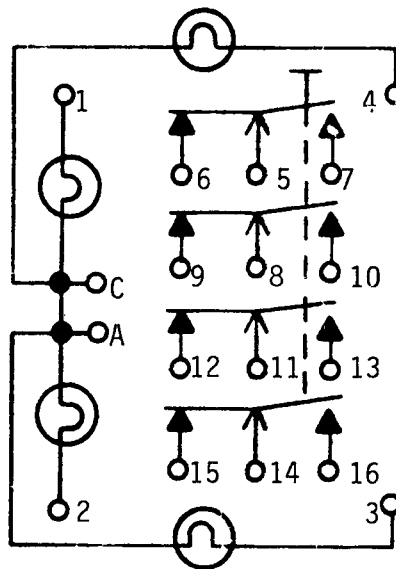
.025 THK. X .070 WIDE TERMINAL WITH (.635 X 1.78)
 .035 WIDE X .085 LONG WIRE PASSAGE HOLE (.89 X 2.16)



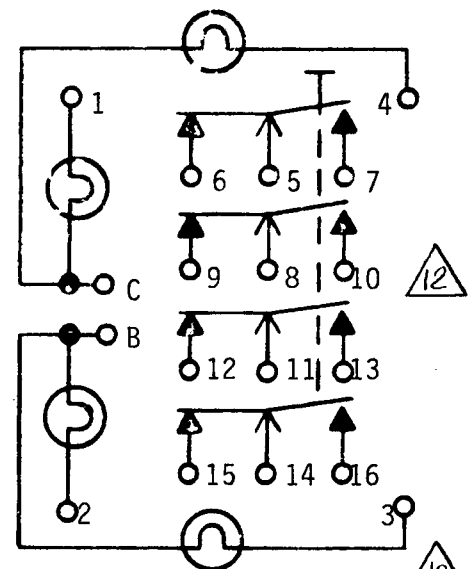
TERMINAL LOCATION $\triangle 1$ $\triangle 9$ $\triangle 12$



08 = 4PDT COMMON-LAMP GROUND (SHOWN)
 07 = 2PDT COMMON-LAMP GROUND DELETE PINS 8 THRU 13.
 00 = INDICATOR COMMON LAMP GROUND, DELETE PINS 5 THRU 16.

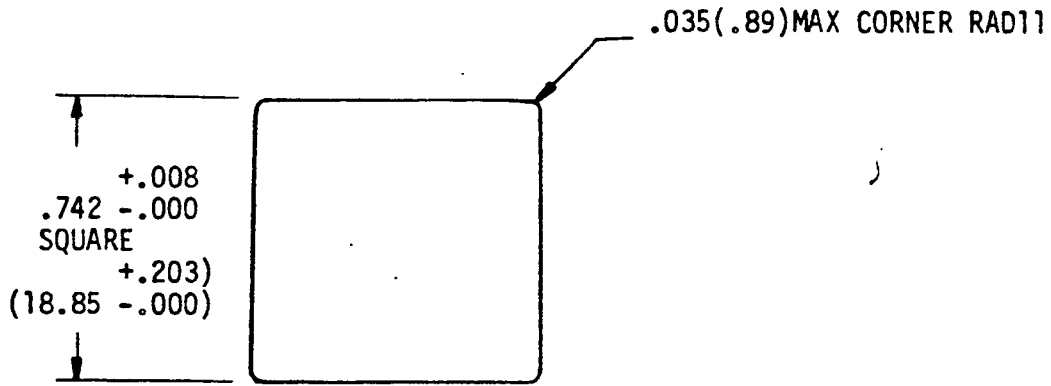


13 = 4PDT SPLIT-LAMP GROUND (SHOWN)
 12 = 2PDT SPLIT-LAMP GROUND DELETE PINS 8 THRU 13.
 14 = INDICATOR SPLIT-LAMP GROUND, OBSOLETE PINS 5 THRU 16.



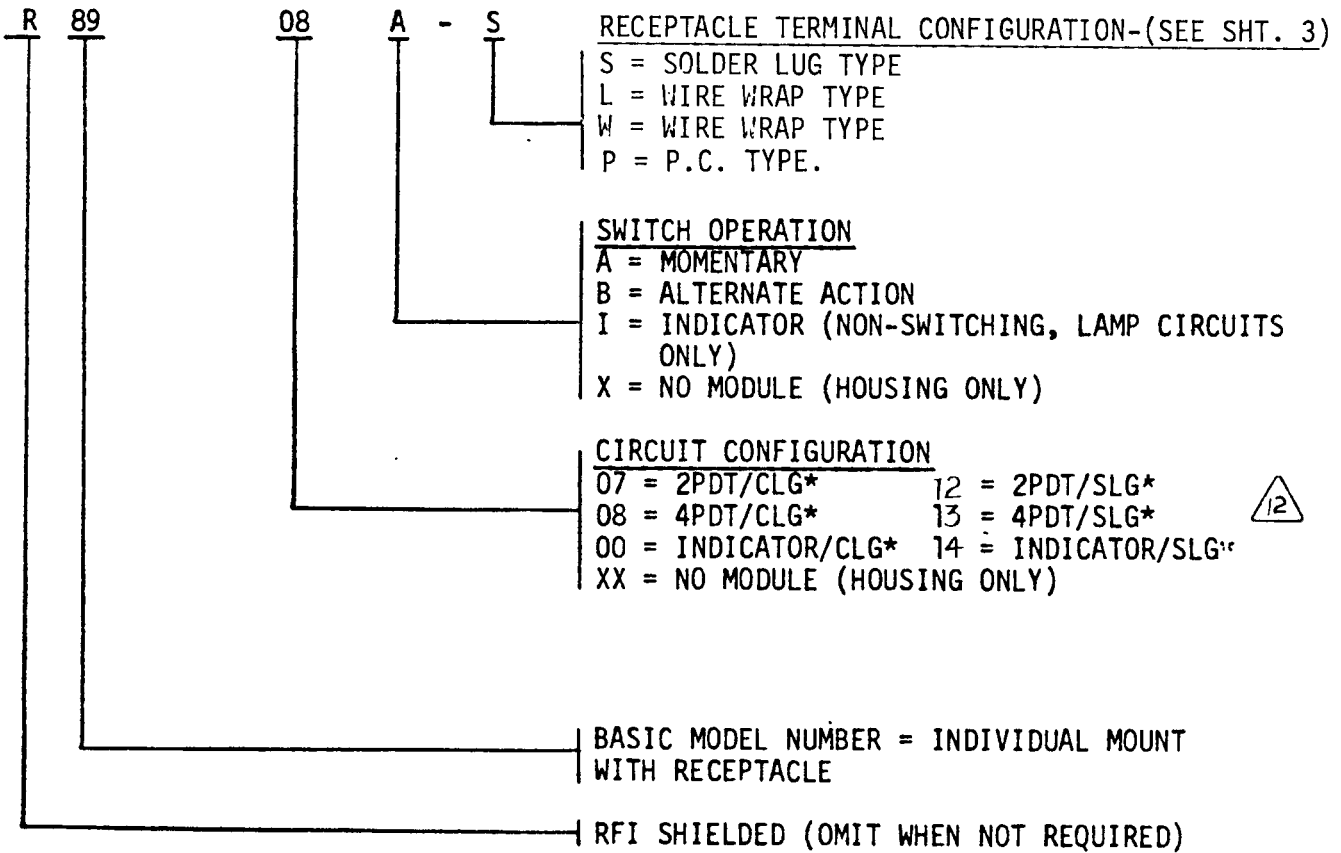
10 = 4PDT SPLIT-LAMP GROUND (SHOWN)
 09 = 2PDT SPLIT-LAMP GROUND DELETE PINS 8 THRU 13.
 11 = INDICATOR SPLIT-LAMP GROUND OBSOLETE PINS 5 THRU 16.

CODE IDENT NO. 12522	DRAWING NO. MODEL 89 CODED MODEL R89 CODED	REV. K	SHEET 4
--------------------------------	--	-----------	------------



RECOMMENDED PANEL
MOUNTING HOLE
SCALE - 2/1

PART NUMBER CODING FOR ORDERING MOUNTING ASSEMBLY WITH SWITCH (80M)
INSTALLED. (SEE NOTE BELOW)



NOTE: DUE TO THE NUMBER OF VARIABLE FEATURES OFFERED, THE PUSHBUTTON/DISPLAY SCREEN MUST BE ORDERED SEPARATELY. REFER TO SERIES 80 SPECIFICATION CONTROL DRAWING FOR ORDERING INFORMATION.

* CLG = COMMON LAMP GROUND
SLG = SPLIT LAMP GROUND

CODE IDENT NO. 12522	SIZE A	DRAWING NO. MODEL 89 & R89 CODED	SHEET 5
--------------------------------	------------------	-------------------------------------	-------------------