

REV F	APPLICATION		REVISIONS			
	NEXT ASSY	USED ON	REV.	DESCRIPTION	DATE	APPROVAL
SH 1			E	REV PER ER-19788	3-6-89	/s/ W.E.B.
			F	REV PER ER-01-38144	12-11-01	<i>[Signature]</i>

DWG NO. MODEL 59C CODED

NOTES: UNLESS OTHERWISE SPECIFIED.

1. ALL TERMINAL NUMBERS APPEAR ON THE HOUSING RECEPTACLE. SWITCH MODULE AND RECEPTACLE BUILD WITH ONLY THOSE TERMINALS REQUIRED BY NUMBER OF POLES ORDERED.
2. UNIT SHALL BE IDENTIFIED WITH STACOSWITCH LOGO, CODE IDENT. NO. 12522, MODEL 59C CODED PART NUMBER, & DATE CODE.
3. UNIT SUPPLIED WITH: ONE (1) #2-56 JACK SCREW FOR SWITCH MODULE INSTALLATION
ONE (1) #2-56 MOUNTING SCREW AND LOCKWASHER FOR HOUSING INSTALLATION.
4. SEE SERIES 50 PUSHBUTTON AND DISPLAY SCREEN SPECIFICATION CONTROL DRAWING. (UP TO 60 KEYED CONFIGURATIONS ARE AVAILABLE. A KEYED PUSHBUTTON WILL MATE ONLY WITH ITS MATCHING KEYED SWITCH MODULE).
5. SEE MODEL 50CM SWITCH MODULE SPECIFICATION CONTROL DRAWING.
6. MATERIALS: HOUSING - ALUMINUM, BLACK ANODIZE OR CHEM. FILM
MOUNTING BRACKETS - ALUM., BLK. ANODIZE OR CHEM. FILM & S.S.
TERMINALS - BERYLLIUM COPPER, GOLD PLATED
SEAL - SILICONE RUBBER, BLACK
7. THE INSTALLATION TORQUE FOR MOUNTING SCREW SHALL BE 8 OUNCE-INCHES MAX..
8. THE WEIGHT OF THE COMPLETE UNIT, INCLUDING MOUNTING ASSEMBLY, SWITCH MODULE & PUSHBUTTON, SHALL BE .200 LBS. MAX..
9. WHEN HOUSING ASSEMBLY ONLY (59CXXXX) IS ORDERED, RECEPTACLE SHALL BE SUPPLIED WITH ALL TERMINALS.
10. MOUNTING SLEEVE MAY BE INSTALLED AS SHOWN OR ROTATED 90° TO ACCOMMODATE TOTAL MOUNTING PANEL THICKNESS SHOWN. AS ILLUSTRATED MOUNTING SLEEVE IS SET UP FOR THINNER PANEL THICKNESS (.062 - .125).

The information and design disclosed herein was originated by and is the property of STACOSWITCH, INC. STACOSWITCH, INC. reserves all patent, proprietary, design, manufacturing, reproduction, use and sale rights thereto, and to any article disclosed therein, except to the extent rights are expressly granted to others. The foregoing does not apply to vendor proprietary parts.

UNLESS OTHERWISE SPECIFIED DIMENSIONS ARE IN INCHES TOLERANCES ARE:
FRACTIONS DECIMALS ANGLES
± _____ .XX ± .03 ± _____
 .XXX ± .010

CUST: CATALOG (STANDARD)
© Copyright StacoSwitch Inc., 2001

17141540-3041  FAX: 714/540-0930
A COMPONENTS CORPORATION OF AMERICA COMPANY
1130 BAKER STREET, COSTA MESA CA. 92626 **USA**

MATERIAL _____
FINISH _____

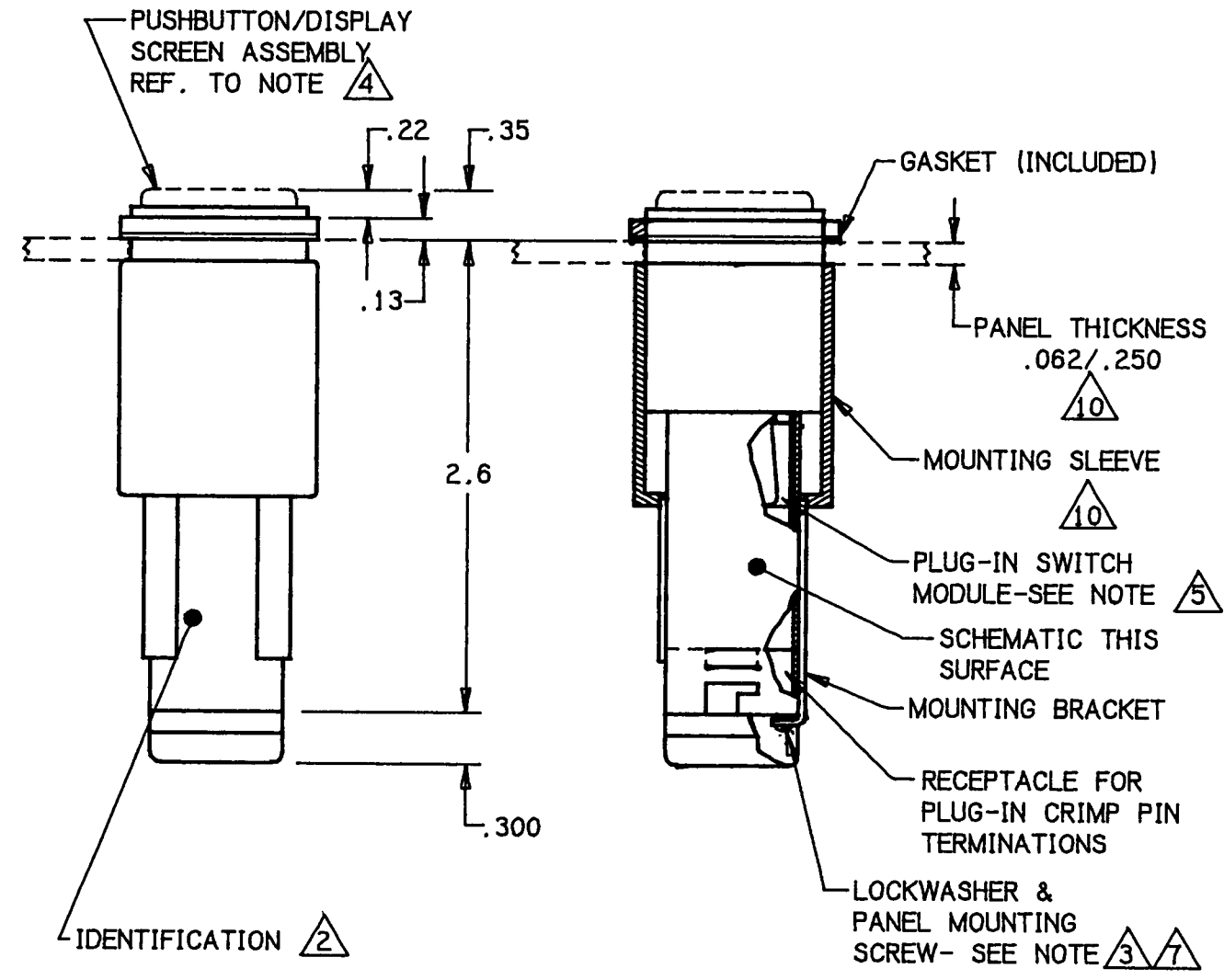
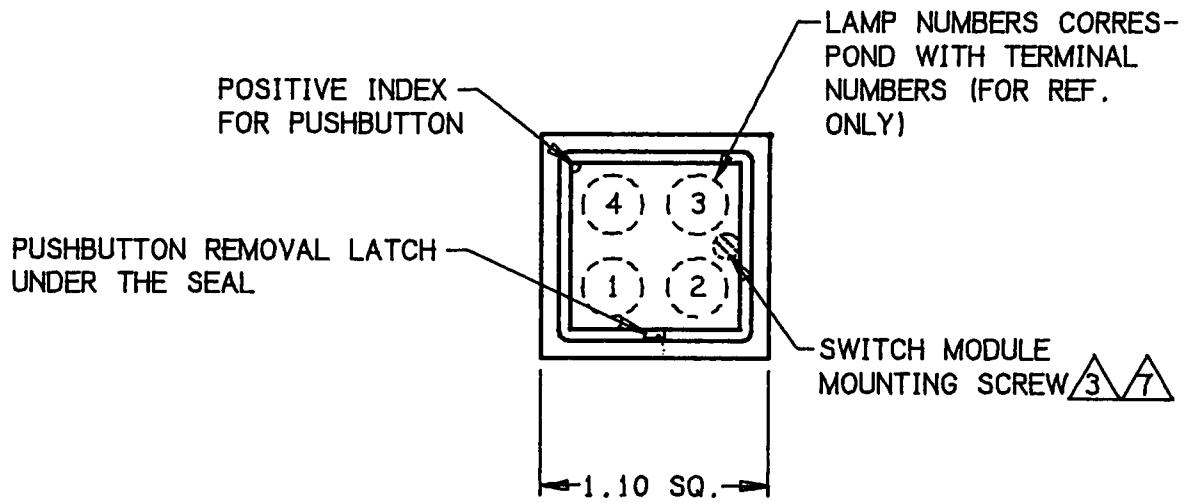
APPROVALS	DATE
DRAWN E. OGLE	6-10-80
CHECKED <i>[Signature]</i>	12-5-01
PROJ. ENG. <i>[Signature]</i>	12/5/01
MGMT <i>[Signature]</i>	12/7/01

TITLE SWITCH/INDICATOR, LIGHTED, 2PDT & 4PDT, MOMENTARY & ALTERNATE ACTION, INDIVIDUAL MOUNT WITH RECEPTACLE, DRIPPROOF SEAL, CRIMP PIN

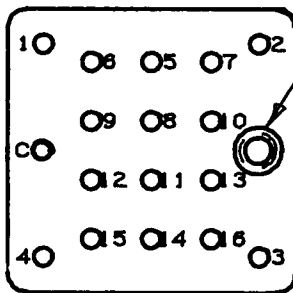
SIZE	CAGE CODE:	DWG NO.	MODEL 59C CODED	REV. F
A	12522			

DO NOT SCALE DRAWING

SCALE NONE SHEET 1 OF 5

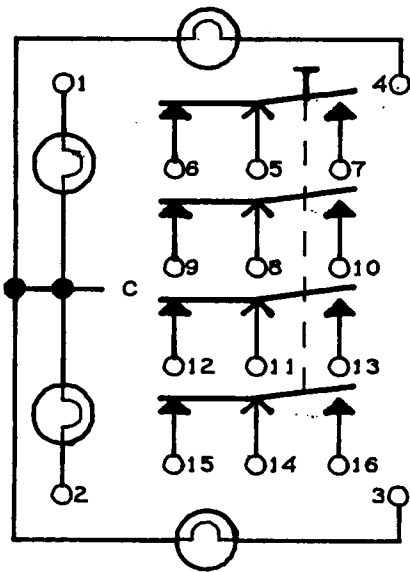


CAGE CODE:	DRAWING NO.	REV.	SHT.
12522	MODEL 59C CODED	F	2

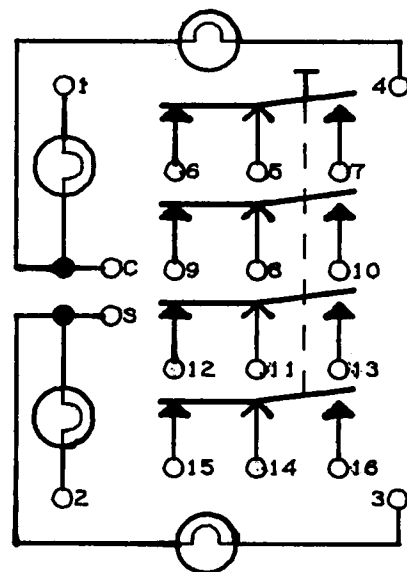


THREADED INSERT FOR SWITCH
MODULE MTG. SCREW AND FOR
PANEL MTG. SCREW $\triangle 3$

TERMINAL LOCATION $\triangle 1 \triangle 9$



08 = 4PDT COMMON-LAMP GROUND (SHOWN).
07 = 2PDT COMMON-LAMP GROUND.
DELETE PINS 8 THRU 13
00 = INDICATOR COMMON-LAMP GROUND.
DELETE PINS 5 THRU 16



10 = 4PDT SPLIT-LAMP GROUND (SHOWN).
09 = 2PDT SPLIT-LAMP GROUND.
DELETE PINS 8 THRU 13
11 = INDICATOR SPLIT-LAMP GROUND.
DELETE PINS 5 THRU 16

CAGE CODE:	DRAWING NO.	REV.	SHT.
12522	MODEL 59C CODED	F	3

SPECIFICATIONS, MODEL 59C SWITCH/INDICATOR MODULE

THE SWITCHES DEFINED BY THIS SPECIFICATION CONTROL DRAWING MEET OR EXCEED ALL REQUIREMENTS OF MIL-S-22885.

1. ELECTRICAL:

A. DIELECTRIC STRENGTH

SEA LEVEL 1000 VRMS
70,000 FEET 450 VRMS

B. INSULATION RESISTANCE 1,000 MEGOHMS • 500 VDC

2. ENVIROMENTAL:

A. TEMPERATURE, OPERATING -65°C TO +85°C

B. THERMAL SHOCK -55°C TO +85°C, PER MIL-STD-202, METHOD 107
TEST CONDITION A

C. ALTITUDE SEA LEVEL TO 70,000 FEET

D. VIBRATION .06 D.A. OR 15 G'S; 10 TO 2000 Hz; PER
MIL-STD-202, METHOD 204, TEST CONDITION B

E. SHOCK 75 G'S 6±1 MILLISECOND: PER MIL-STD-202,
METHOD 213, TEST CONDITION B AND HI-IMPACT
SHOCK PER MIL-S-901C.

F. SAND AND DUST PER MIL-STD-202, METHOD 110, TEST CONDITION B

G. HUMIDITY 10 DAYS, WITH 10 CYCLES AT 90-98 PERCENT
RELATIVE HUMIDITY AT 65°C PER MIL-STD-202,
METHOD 106.

H. SALT SPRAY 96 HRS., PER MIL-STD-202, METHOD 101, TEST
CONDITION A; WITH PUSHBUTTON INSTALLED.

I. FUNGUS NONE OF THE MATERIALS OR FINISHES USED IN THE
CONTRUCTION OF THIS SWITCH ASSEMBLY WILL
SUPPORT ANY FUNGUS ENCOUNTERED IN TROPICAL
CLIMATES.

J. DRIPPROOF/SPLASHPROOF MEETS DRIPPROOF/SPLASHPROOF REQUIREMENTS
OF MIL-S-22885; REFDRIPPROOF TEST PER
MIL-S-108 WITH SWITCH/INDICATOR MODULE
AND PUSHBUTTON INSTALLED.

CAGE CODE:	DRAWING NO.	REV.	SHT.
12522	MODEL 59C CODED	F	5