

REV U  
 SH 1  
 DWG NO. MODEL 41 THRU 44 CODED & MODEL R41 THRU R44 CODED

**SPECIFICATION CONTROL DRAWING**

**REVISIONS**

REV.	DESCRIPTION	DATE	APPROVAL
U	DDC, REDRAWN, REPLACES ER-17951 DATED, 10-28-85, SEE ER-01-35798	10-28-85	E. OGLE


NOTES: UNLESS OTHERWISE SPECIFIED.

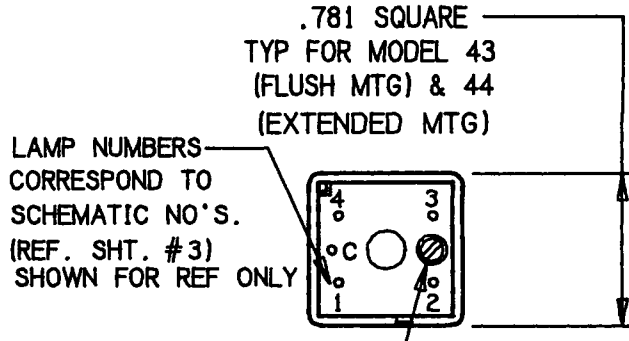
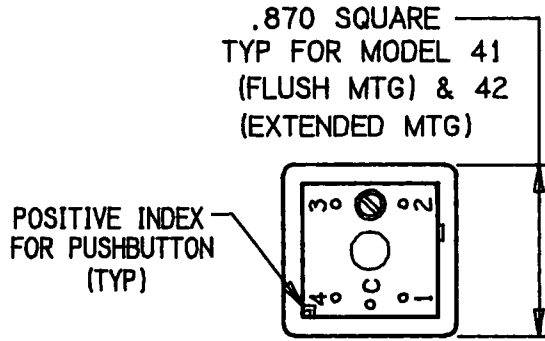
1. INSTALLATION TORQUE FOR THE MOUNTING SCREW SHALL BE 16 OUNCE-INCHES MAXIMUM.
2. UNIT SHALL BE IDENTIFIED WITH STACOSWITCH, PART NUMBER, AND DATE CODE.
3. SEE SERIES 40 PUSH BUTTON AND DISPLAY SCREEN SCD.
4. UNIT SUPPLIED WITH ONE (1) #2-56 X .75 LONG SCREW AND LOCKWASHER FOR MOUNTING.
5. UP TO 60 KEYED CONFIGURATIONS ARE AVAILABLE: A KEYED PUSH BUTTON WILL MATE ONLY WITH ITS MATCHING KEYED INDICATOR MODULE.
6. WEIGHT OF .053 LB. INCLUDES PUSH BUTTON, AND LAMPS.

1. MATERIALS:
- |   |   |                             |
|---|---|-----------------------------|
| HOUSING - 6061 ALUMINUM, BLACK ANODIZE  | } | NON-RFI SHIELDED UNITS ONLY |
| MOUNTING BRACKET AND LATCH LEVER - CRES |   |                             |
| TERMINALS - BRASS, GOLD PLATE           |   |                             |
|   |   |                             |
| HOUSING - 6061 ALUMINUM, CHEM FILM*     | } | RFI SHIELDED UNITS ONLY     |
| MOUNTING BRACKET AND LATCH LEVER - CRES |   |                             |
| TERMINALS - BRASS, GOLD PLATE           |   |                             |

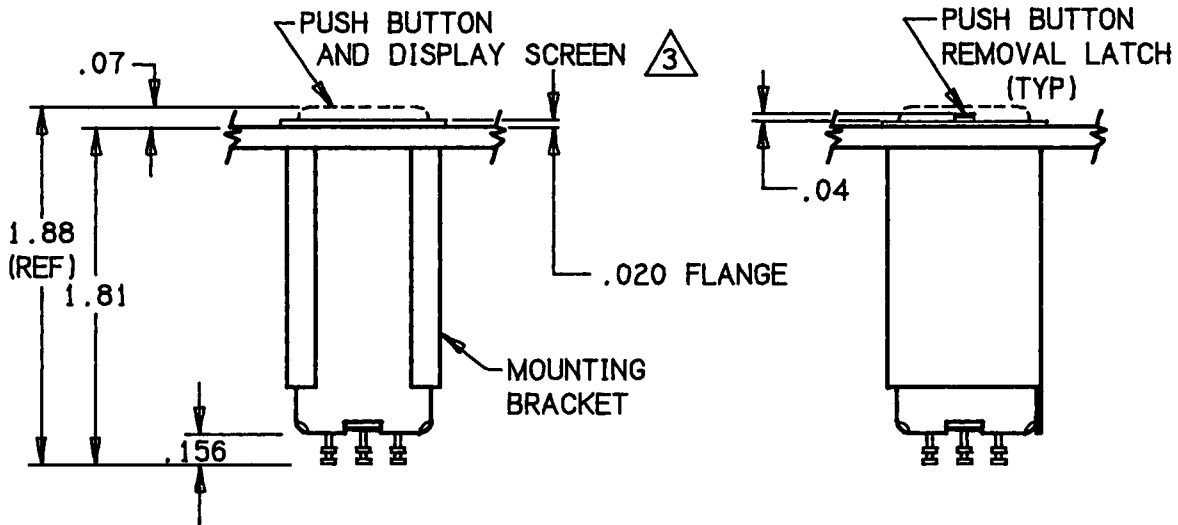
\*RFI SHIELDED UNITS - CHEMICAL FILM (IRRIDITE OR ALODINE)  
 COLOR SHALL BE LIGHT STRAW TO GOLD

The information and design disclosed herein was originated by and is the property of STACOSWITCH, INC. STACOSWITCH, INC. reserves all patent, proprietary, design, manufacturing, reproduction, use and sale rights thereto, and to any article disclosed therein, except to the extent rights are expressly granted to others. The foregoing does not apply to vendor proprietary parts.

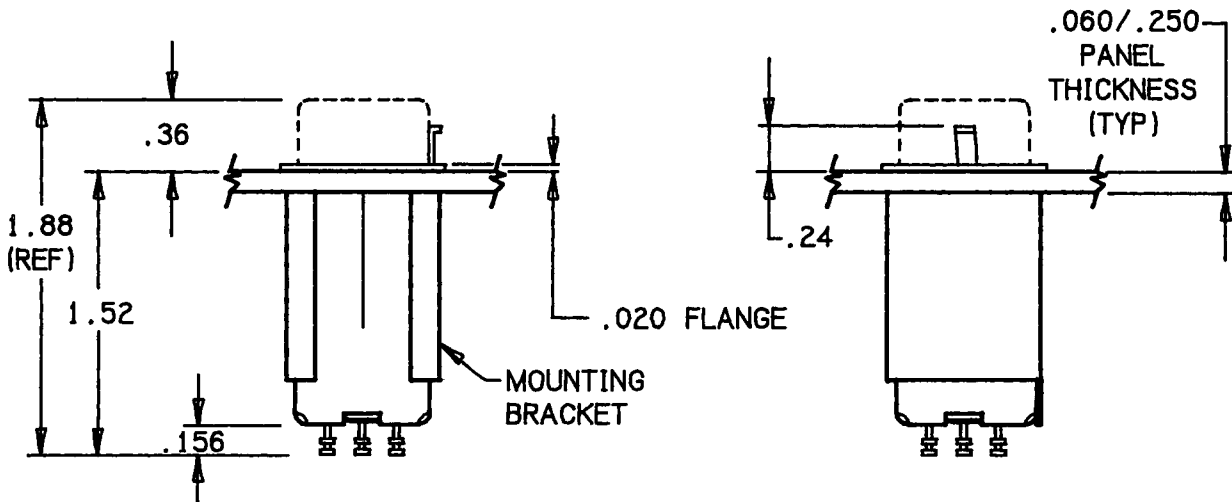
UNLESS OTHERWISE SPECIFIED DIMENSIONS ARE IN INCHES TOLERANCES .XX ± .03 .XX ± .010 ANGLE ± ---	CONTRACT NO. © Copyright StacoSwitch Inc., 2000	 <p>714/540-3041 FAX: 714/540-0930          A COMPONENTS CORPORATION OF AMERICA COMPANY          1130 BAKER STREET, COSTA MESA, CA. 92626  <b>USA</b></p>								
CUSTOMER CATALOG STANDARD SPECIFICATION/DRAWING	<table border="1" style="width: 100%; border-collapse: collapse;"> <tr> <th style="width: 50%;">APPROVALS</th> <th style="width: 50%;">DATE</th> </tr> <tr> <td>DRAWN E. OGLE</td> <td>2-6-69</td> </tr> <tr> <td>CHECKED <i>[Signature]</i></td> <td>9-12-00</td> </tr> <tr> <td>PROJ. ENG. <i>[Signature]</i></td> <td>9/13/00</td> </tr> </table>	APPROVALS	DATE	DRAWN E. OGLE	2-6-69	CHECKED <i>[Signature]</i>	9-12-00	PROJ. ENG. <i>[Signature]</i>	9/13/00	TITLE INDICATOR, FOR USE WITH 4-LAMP ILLUMINATED PUSH BUTTON SIZE CAGE CODE: A 12522 DWG NO. MODEL 41 THRU 44 CODED & MODEL R41 THRU R44 CODED UNIT WEIGHT SEE SHEET 5
APPROVALS	DATE									
DRAWN E. OGLE	2-6-69									
CHECKED <i>[Signature]</i>	9-12-00									
PROJ. ENG. <i>[Signature]</i>	9/13/00									
DO NOT SCALE DRAWING	MGMT.	<table border="1" style="width: 100%; border-collapse: collapse;"> <tr> <td style="width: 50%;">SCALE: FULL</td> <td style="width: 50%;">SHEET 1 OF 5</td> </tr> </table>	SCALE: FULL	SHEET 1 OF 5						
SCALE: FULL	SHEET 1 OF 5									



① MOUNTING DISPLAY SCREEN

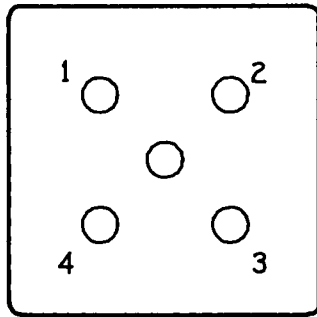


**MODEL 41 AND 43 (FLUSH MOUNTING)**

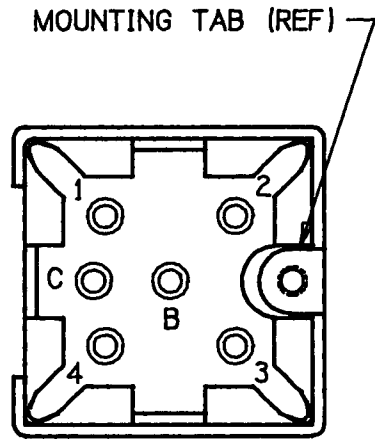


**MODEL 42 AND 44 (EXTENDED MOUNTING)**

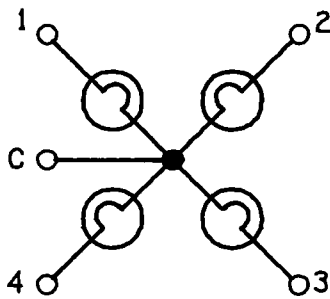
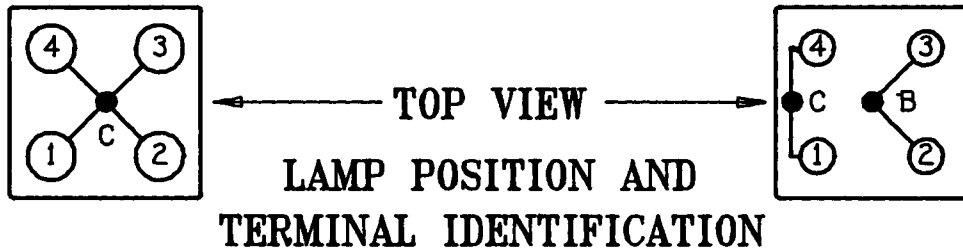
CAGE CODE: <b>12522</b>	DRAWING NO. MODEL 41 THRU 44 CODED MODEL R41 THRU R44 CODED	REV. U	SHT. 2
----------------------------	---	-----------	-----------



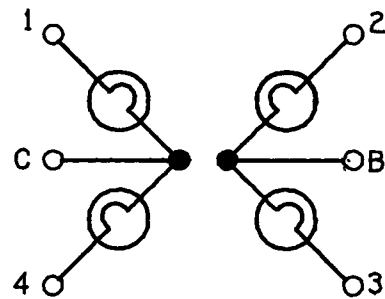
**BOTTOM VIEW  
COMMON LAMP GROUND**



**BOTTOM VIEW  
SPLIT LAMP GROUND**



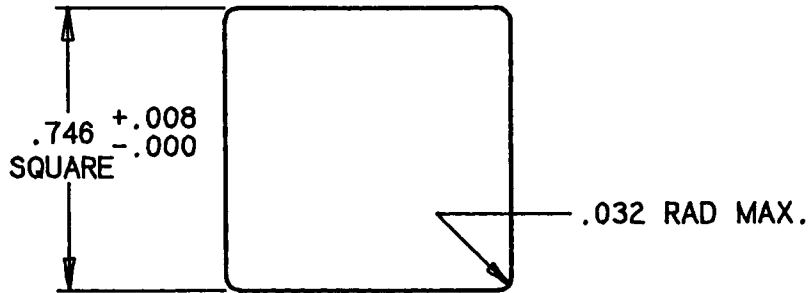
**00I = COMMON LAMP GROUND  
AS VIEWED FROM BOTTOM**



**11I = SPLIT LAMP GROUND  
AS VIEWED FROM BOTTOM**

**SCHEMATICS**

CAGE CODE: <b>12522</b>	DRAWING NO. MODEL 41 THRU 44 CODED MODEL R41 THRU R44 CODED	REV. U	SHT. 3
----------------------------	---	-----------	-----------



RECOMMENDED PANEL

MOUNTING HOLE

SCALE: 2 X 1

SWITCH PART NUMBER CODE

R   43   N   00I - XX

[ TWO DIGIT NUMBER (01 THRU 60) SPECIFYING POSITIVE KEYED HUB. MUST MATCH KEYING NUMBER OF MATING PUSHBUTTON. OMIT FOR NON-KEYED.

[ CIRCUIT CONFIGURATION  
00I/CLG = INDICATOR ONLY, 11I/SLG = INDICATOR ONLY

[ S = MOISTURE TIGHT  
N = ENCLOSED (NO SEALS)

[ MODEL NO:      41 - FLUSH MOUNTING      .870 FLANGE  
                    42 - EXTENDED MOUNTING      .870 FLANGE  
                    43 - FLUSH MOUNTING      .781 FLANGE  
                    44 - EXTENDED MOUNTING      .781 FLANGE

[ RFI SHIELDED - (OMIT FOR NON-RFI) 

(CLG = COMMON LAMP GROUND  
SLG = SPLIT LAMP GROUND)

CAGE CODE:	DRAWING NO.	REV.	SHT.
<b>12522</b>	MODEL 41 THRU 44 CODED MODEL R41 THRU R44 CODED	U	4

SPECIFICATIONS, MODEL 41 THRU 44 INDICATORS

1. MECHANICAL:

- A. WEIGHT, LBS. .053 (INCLUDING PUSH BUTTON & LAMPS)
- B. LIFE 1000 HRS.

2. ELECTRICAL:

- A. LAMP CIRCUIT RESISTANCE 1 OHM
- B. DIELECTRIC 1000 VRMS
- C. INSULATION RESISTANCE 500 MEGOHM

3. ENVIRONMENTAL:

- A. TEMPERATURE, OPERATING -65° TO +85°C
- B. THERMAL SHOCK -55° TO +85°C
- C. ALTITUDE TO 70,000 FEET
- D. VIBRATION .06 D.A. OR 15 G'S, 10 TO 2,000 Hz PER MIL-STD-202, METHOD 204, TEST CONDITION B
- E. SHOCK 50 G'S, 11±1 MILLISECOND; PER MIL-STD-202, METHOD 202
- F. SAND AND DUST PER MIL-STD-202C, METHOD 110, TEST CONDITION B
- G. HUMIDITY 10 DAYS, WITH 10 CYCLES AT 90-98 PERCENT RELATIVE HUMIDITY AT 65°C PER MIL-STD-202, METHOD 106
- H. SALT SPRAY 48 HR., PER MIL-STD-202, METHOD 101 TEST CONDITION B, WITH PUSH BUTTON INSTALLED.
- I. FUNGUS NONE OF THE MATERIALS OR FINISHES USED IN THE CONSTRUCTION OF THIS SWITCH ASSEMBLY WILL SUPPORT ANY FUNGUS ENCOUNTERED IN TROPICAL CLIMATES
- J. EXPLOSION THESE UNITS CAN BE SAFELY OPERATED UNDER LOAD IN AN EXPLOSIVE ATMOSPHERE WITHOUT DANGER OF EXPLOSION PER MIL-STD-202, METHOD 109

CAGE CODE:	DRAWING NO.	REV.	SHT.
<b>12522</b>	MODEL 41 THRU 44 CODED MODEL R41 THRU R44 CODED	U	5