


SPECIFICATION CONTROL DRAWING		LTR	REVISION	DATE	APPROVAL
	E		REVISED ER 6485 TYPE II	7/7/70	REW
	F		REVISED ER 8030 TYPE II	10/9/73	EHB
	G		REVISED ER 9400 TYPE II	12/21/75	YCB
	H		REVISED ER 9418 TYPE II	1/12/76	YCB
	J		REVISED PER ER 10997 TYPE II	2-21-78	REW
	K		REVISED PER ER 12129 TYPE I	7-30-79	JR
REV. LETTERS L, M, N, P, R, T, U, V NOT USED					
	W		REV. PER ER 16465 TYPE II	12-2-83	YCB

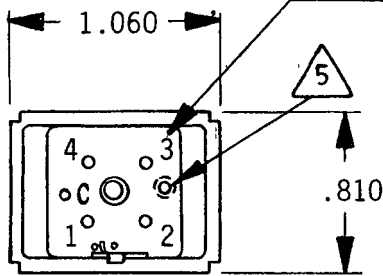
NOTES: UNLESS OTHERWISE SPECIFIED

1. ALL TERMINAL NUMBERS APPEAR ON THE SWITCH TERMINAL HEADER. SWITCH IS BUILT WITH ONLY THOSE TERMINALS REQUIRED BY FUNCTION.
2. UNIT SHALL BE IDENTIFIED WITH STACOSWITCH, PART NUMBER, AND DATE CODE.
3. UNIT SUPPLIED WITH ONE (1) #2-56 X 1" LONG SCREW AND LOCKWASHER FOR MOUNTING.
4. SEE SERIES 40R PUSH BUTTON AND DISPLAY SCREEN SCD.
5. THE INSTALLATION TORQUE FOR THE MOUNTING SCREW SHALL BE 8 OUNCE-INCHES MAXIMUM.

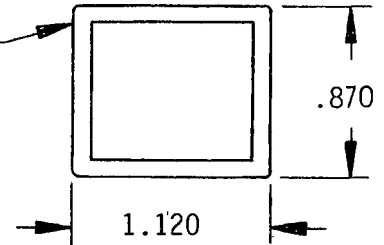
UNLESS OTHERWISE SPECIFIED DIMENSIONS ARE IN INCHES	PREPARED	DATE	 STACOSWITCH STACCO, INC. • CALIFORNIA			
	<i>D.W. JEFFERS</i>	<i>11-13-69</i>				
TOLERANCES XX ± .03 XXX ± .010 ANGLE ± ----	CHECKED	DATE	TITLE SWITCH, RECTANGULAR-2PDT AND 4PDT FOR USE WITH 4 LAMP ILLUMINATED PUSH BUTTON			
	<i>[Signature]</i>	<i>11-13</i>				
CUSTOMER CATALOG STANDARD	ENGINEER	DATE	CODE IDENT NO.	SIZE	DRAWING NO.	REV
	<i>[Signature]</i>	<i>11-13-69</i>	<i>12522</i>	<i>A</i>	MODEL 40R CODED & MODEL R40R CODED	<i>W</i>
SPECIFICATION / DRAWING	APPROVED	DATE	SCALE	UNIT WEIGHT	SHEET 1 OF 6	
	<i>[Signature]</i>	<i>11/23/70</i>	<i>FULL</i>	<i>SEE SHEET 5</i>		
	PROD MGR	DATE				
	<i>[Signature]</i>	<i>11/25/69</i>				

MODEL 40R CODED & MODEL R40R CODED

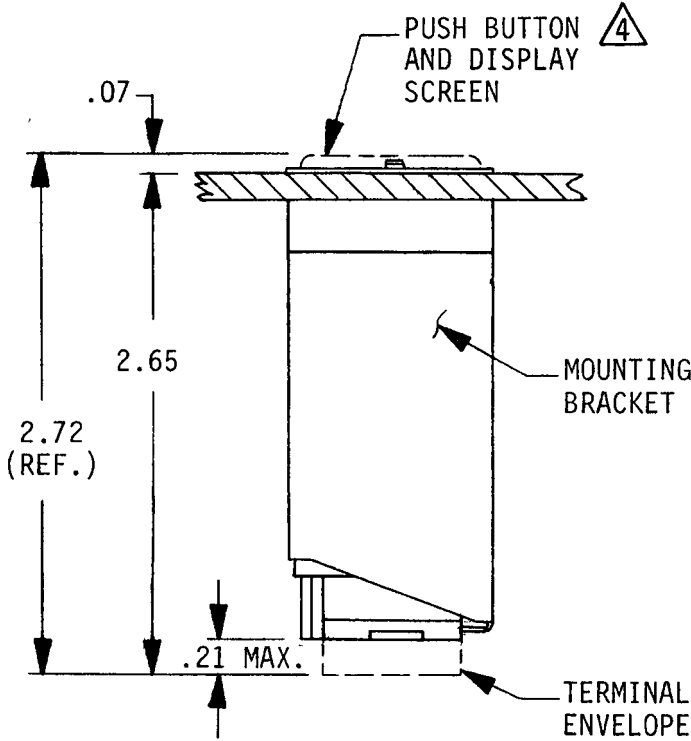
LAMP NUMBERS CORRESPOND TO
TERMINAL NUMBERS SHOWN FOR
FOR REF. ONLY.



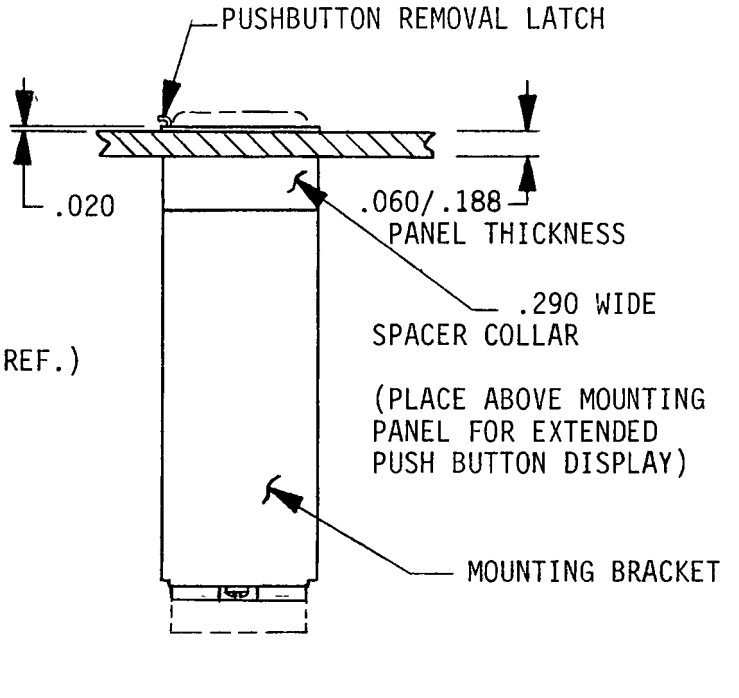
OPTIONAL
BEZEL, SEE
CODED P/N,
SHEET #4



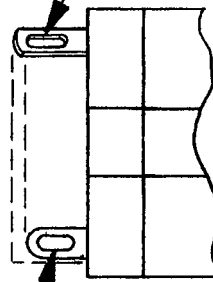
PUSH BUTTON
AND DISPLAY
SCREEN



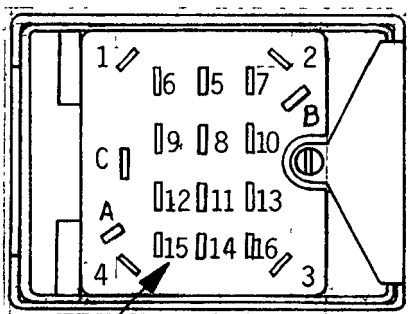
PUSHBUTTON REMOVAL LATCH



LAMP TERMINALS .090 WIDE
WITH .055 X .090 SLOTS
(PINS 1 THRU 4, A, B, C)

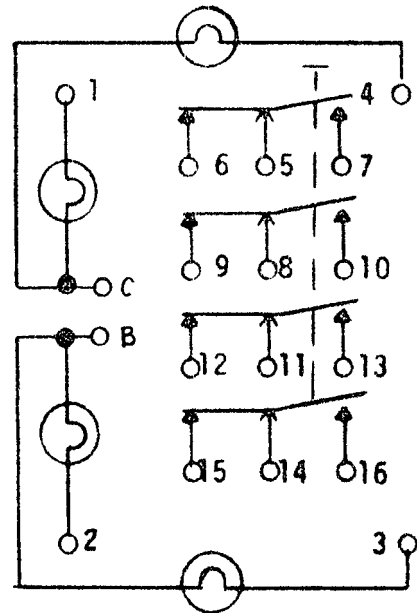
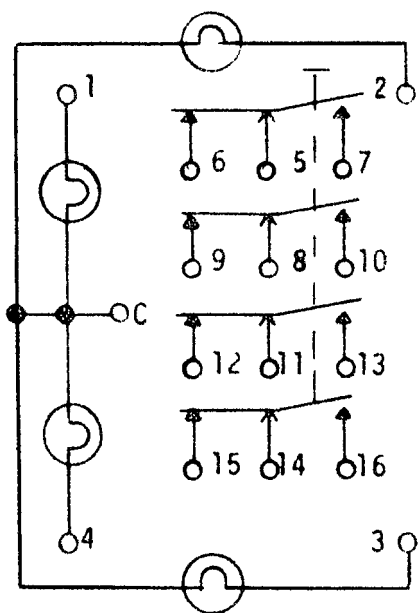


SWITCH TERMINALS .070 WIDE
WITH .035 X .070 SLOTS
(PINS 5 THRU 16, REF.)



TERMINAL ARRANGEMENT SHOWN
TWICE SIZE FOR CLARITY. 1

CODE IDENT NO 12522	SIZE A	MODEL R40R CODED & MODEL 40R CODED	SHEET 2 OF 6
-------------------------------	------------------	---------------------------------------	-----------------



08 = 4PDT COMMON-LAMP GROUND (SHOWN)

07 = 2PDT COMMON-LAMP GROUND

00 = INDICATOR COMMON LAMP GROUND

10 = 4PDT SPLIT-LAMP GROUND (SHOWN)

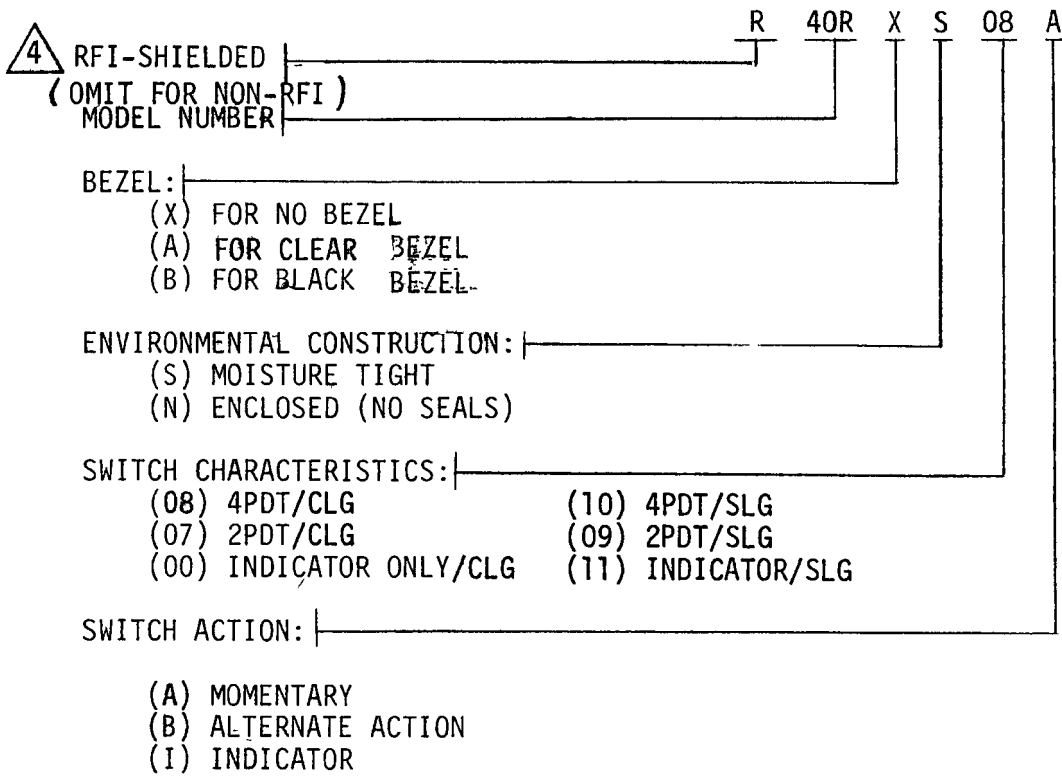
09 = 2PDT SPLIT-LAMP GROUND

11 = INDICATOR SPLIT-LAMP GROUND

DELETE PINS 8 THRU 13 FOR 2PDT CONFIGURATION
 DELETE PINS 5 THRU 16 FOR INDICATOR CONFIGURATION
 SCHEMATIC MAY BE EITHER MOMENTARY OR ALTERNATE ACTION

CODE IDENT NO 12522	SIZE A	DRAWING NO MODEL 40R CODED MODEL R40R CODED	SHEET 3 of 6
-------------------------------	------------------	---	-----------------

SWITCH/INDICATOR PART NUMBER CODE:



CLG = COMMON LAMP GROUND
 SLG = SPLIT LAMP GROUND

CODE IDENT NO 12522	SIZE A	MODEL R40R CODED & MODEL 40R CODED	SHEET 4 OF 6
------------------------	-----------	---------------------------------------	-----------------

- D. VIBRATION .06 D.A. OR 15 G's, 10 TO 2,000 HZ PER MIL-STD-202, METHOD 204, TEST CONDITION B.
- E. SHOCK 50 G'S, 11 ±1 MILLISECOND; PER MIL-STD-202, METHOD 202.
- F. SAND AND DUST PER MIL-STD-202, METHOD 110, TEST CONDITION B.
- G. HUMIDITY 10 DAYS, WITH 10 CYCLES AT 90-98 PERCENT RELATIVE HUMIDITY AT 65°C PER MIL-STD-202, METHOD 106.
- H. SALT SPRAY 48 HR., PER MIL-STD-202, METHOD 101 TEST CONDITION B, WITH PUSH BUTTON INSTALLED.
- I. FUNGUS NONE OF THE MATERIALS OR FINISHES USED IN THE CONSTRUCTION OF THIS SWITCH ASSEMBLY WILL SUPPORT ANY FUNGUS ENCOUNTERED IN TROPICAL CLIMATES.
- J. EXPLOSION THESE UNITS CAN BE SAFELY OPERATED UNDER LOAD IN AN EXPLOSIVE ATMOSPHERE WITHOUT DANGER OF EXPLOSION PER MIL-STD-202, METHOD 109.